

Donate

GMPA exists because of the support of like-minded individuals and organisations who share our desire to see an end to poverty in our city region. Those already experiencing poverty need our support now more than ever. Individuals and organisations can now make a one-off or monthly donation to GMPA which will directly strengthen and grow our work.

Donating is quick and easy via our website, and you can choose to make a one-off or regular [donation](#). If you are interested in finding out more, or to donate, click on the infographic.

Thank you



Review of 2022

Graham Whitham, Chief Executive Officer, GMPA

This has been a challenging year for the fight against poverty, with factors outside of our control here in Greater Manchester acting to squeeze incomes and put more households at risk of financial hardship. As we have been saying all along, there has been a poverty crisis in our city region and other parts of the UK for years. For many, the cost-of-living crisis is compounding an already dire situation in which it is impossible to make-ends-meet. We have seen first hand this year, just how challenging things are for people.

In spite of these challenges, Greater Manchester continues to step up. We now have well over 500 accredited [Real Living Wage](#) employers in the city-region – a fact we celebrated during Living Wage Week in November.

There's more political will to tackle poverty than ever, with more of our ten councils working with partners to introduce anti-poverty strategies. We've been pleased to see Bury Council, among others, adopting many of our recommendations in their strategy. Others, such as Salford and Tameside councils are voluntarily adopting the [socio-economic duty](#), something GMPA is encouraging all public bodies to do. The duty is all about understanding the impact of decisions on people experiencing poverty.

Effective implementation of the socio-economic duty requires organisations to take into account the views, experiences, expertise and perspectives of people with lived experience of socio-economic disadvantage. Doing this effectively means going further than simply consulting people. Poverty Truth Commissions are a positive way of embedding the principles of meaningful engagement and we have been proud to run the Tameside Poverty Truth Commission (TPTC), which came to an end in November, at GMPA. You can read more about the TPTC and the recommendations coming out of it later in this newsletter.

Continued on the following page.



Review of 2022 continued

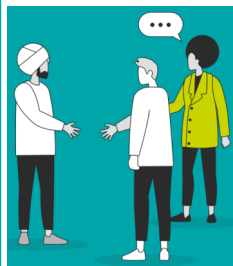
There has also been growing interest in the [‘cash-first’ approach](#) to poverty that GMPA and others, including the Independent Food Aid Network and Trussell Trust, have been advocating for. This means defaulting to giving people on a low income money as opposed to ‘in-kind’ support such as food parcels and energy vouchers. We know that this is the most effective way of supporting someone experiencing or at risk of financial hardship. It has been good to see Wigan and Oldham councils, among others, championing this approach.

On this theme, our [Cost-of-living Crisis Conference](#) in October brought over 100 delegates from across the city region and 30 speakers from across the UK together to focus on local and practical monetary response to poverty. As well as exploring cash-first approaches, sessions focussed on benefit uptake, the Real Living Wage and supporting people to avoid problem debt.

At GMPA, we have continued to grow [the team](#) so we’re better able to support the fight against poverty across the city-region. Our programme offer in 2022 has included [Money Matters](#). Money Matters is piloting the provision of benefits and debt advice in schools. It is helping us to reach dozens of parents in the Stretford area who might otherwise not have sought help. The financial gains (i.e. through additional benefits claimed) we have secured for parents through Money Matters currently stands at £50,000, with several months of the programme left to run.



We have also expanded our [Money Advice Referral Tool](#) (already in place in Oldham and Tameside) programme to a further four boroughs (Bury, Manchester, Trafford and Wigan). The Tool describes all the places that people can go for advice and other income maximisation support.



We have seen the difference the toolkit makes for organisations and service users. For example, a frontline family intervention worker in Tameside had been working with a client who is not allowed to hold a bank account presently. Through utilising the toolkit, the family intervention worker was able to refer the client to an organisation that could support her. In doing so, she disclosed she struggled with debt problems, and using the toolkit the family intervention worker was able to facilitate debt reconciliation.

Throughout 2022 we have continued to support the network with our regular newsletters. In addition, one of our biggest activities this year has been the launch of the [Greater Manchester Poverty Monitor 2022](#). This resource details statistics relating to poverty from across the city region. Where possible, data is presented at a ward or neighbourhood level. We know organisations have been using this data to make a case for their services, target support and residents and inform funding bids. Supporting the network in this way is central to what we do – please keep letting us know how you are using the Monitor.

Finally, GMPA, along with others, continue to make our voice heard on the need for national action to end poverty. This includes increasingly raising our voice in [the media](#).

We know that to end poverty in Greater Manchester will require action from national government. It is not sustainable to have millions of people struggling to afford food or put the heating on. Nor is it sustainable to expect charities and local public sector organisations to pick up the pieces. Regardless of what is happening with inflation or the wider economy, everyone should be able to afford a decent standard of living year in, year out. It should be a national ambition, led by central government to make that a reality.

Thank you for your ongoing support.

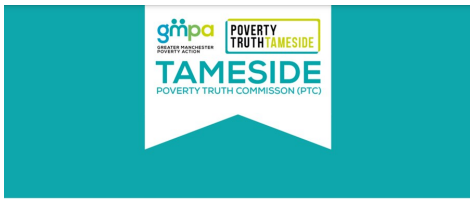
With best wishes for the festive season and for 2023.

Graham and the team at GMPA



Celebrating the Tameside Poverty Truth Commission

Poverty Truth Commissions (PTCs) bring people with lived experience of poverty together with civic and business leaders in a community, to explore what poverty means in their area and to develop solutions and recommendations for change. GMPA ran the [Tameside Poverty Truth Commission](#) until November 2022.



OCTOBER 2021 - NOVEMBER 2022 | REPORT & RECOMMENDATIONS



Closing Event

At the end of November we marked the closing of the Tameside Poverty Truth Commission, with an event at Dukinfield Town Hall. The event was a celebration of the commissioners' achievements, in exploring poverty in Tameside and taking action to prevent and reduce poverty in their community.

We heard how much the commission had meant to the lives of commissioners, creating new friendships and helping to change perspectives and approaches to poverty in Tameside.

Commissioner Tracey shared her family's experiences of living in poverty, recognising that there is still more to be done to support those in crisis and affected by poverty. There was also time taken to remember Karen McBride who sadly passed away in August, with Fran sharing a heartfelt poem in Karen's memory.

The emotional event reflected the nature of the PTC itself, in being a powerful space for the sharing of stories and a focus on the need for tangible change to address poverty.

"It opened my eyes to issues I hadn't considered before"
Tameside PTC Commissioner

Final Report & Recommendations

The Commission has now published its findings and its recommendations for change in Tameside. You can read the report [here](#). The Commission's recommendations include:

- Creating a Tameside Poverty Charter for local organisations to commit to, including involving people with lived experience of poverty in decision making.
- Developing poverty awareness training with lived experience input, for frontline and other relevant staff in Tameside support services.
- Declaring a poverty emergency in Tameside.

"Everyone needs to know that this is the reality of living in poverty... with your help we can really identify ways of improving things"
Tameside PTC Commissioner

Legacy & Next Steps

We are delighted that the PTC has already started to deliver on its recommendations, creating long-lasting change in Tameside. This includes:

- Support services now regularly co-locating in Tameside One, a key Council hub.
- Housing associations reviewing how they interact with customers and support those in rent arrears.
- People with lived experience of poverty being involved in reviewing and designing services, including Family Hubs within Children's Services, and the Living Well project.

Commissioners will continue to meet to review the recommendations and progress made against them. They will also be influencing change via local networks and forums.

We would like to thank everyone who has been involved with the Tameside Poverty Truth Commission or who has helped to make it a reality. Thank you.



Policy and Research updates

We are providing a summary of the latest news and policy developments to keep you up to date with what is happening across the UK.



Students will be hit harder by the cost-of-living crisis than previously thought. Poorest students will be more than £1,000 worse off than in 2020 - 21. [Read more](#)

Nearly seven in ten people (67%) are worried about being able to afford Christmas dinner this year, according to a survey by The Salvation Army. [Read more.](#)

Nearly two in five (39%) defined benefit (DB) pension scheme members fear they will not have enough money to see them through retirement, according to a poll. [Read more.](#)

The latest survey from the [Office for National Statistics](#) (ONS) exposes divisions across the country in terms of how people are being affected by higher living costs. [Read more.](#)

Fresh fruit and veg prescribed to low-income families in UK trial. [Read more.](#)

The North East Child Poverty Commissions says childcare is the single biggest barrier to employment and increasing working hours. [Read more.](#)

'I'm knackered': people forced to take second jobs amid cost of living crisis. [Read more.](#)

One in five [Muslims](#) living in the [UK](#) are struggling to afford their household bills and have been dependent on a food bank since August 2021, according to research conducted by Muslim Census. [Read more.](#)

More than a million Brits under the age of 45 could rule themselves out of the first-time buyer market as the cost of living bites. [Read more.](#)

In its report *Over the Odds*, the Centre for Social Justice (CSJ) finds that in at least seven key areas the poorest face a 'poverty premium' rate, including areas such as the price of credit and prepayment meters, which could be costing such families around £480 a year. [Read more.](#)

A fifth of the UK workforce (19%) plan to leave their current job for a role offering a higher salary if the cost-of-living crisis continues or gets worse next year, according to a new study. [Read more.](#)

Across England, 22% of households will face fuel poverty this winter, but for those households with young children (0-4 years old), the figure rises to 35%. [Read more.](#)

Research developments

A survey of school aged children aged between 7 and 16 found that 40% reported being food insecure over the last month. Of these (112 children out of 280 sampled at random in state schools). Nearly 10% sadly revealed that they have had 'many experiences' of food poverty and 12.5% have had 'several experiences' over the last month. [Read more.](#)

The number of households in fuel poverty will increase to 8.4 million from April – up from last October's 4.5 million – when Government support drops despite spiralling prices, campaigners have predicted. National Energy Action (NEA) said those in fuel poverty will include 1.8 million carers, 5.9 million low income, and financially vulnerable households, 3.6 million people with a disability and 1.6 million households in homes without a gas supply. [Read more.](#)



More than one in seven (15 per cent) pensioners have 'unretired' as a response to the current cost-of-living crisis, research from Standard Life has revealed. [Read more.](#)

The cost-of-living crisis will continue to intensify as inflation soars and government support lags. Organisations and campaigners must continue to call on the government to do more to tackle the harsh economic realities for the most vulnerable. More articles are available on our [website](#).

We were amazed!

“We are astounded by people’s generosity”, was a comment made over and over again by our volunteers at the recent Stockport Foodbank collection in Tesco’s Extra stores in the Stockport area.

As a town our residents are facing just as many difficulties as the next person, however the willingness of the public to help those in greater need is so humbling to see. The donations literally never stopped coming in, from the single tin to full trolleys – the public just wanted to help! Early indications are that this may be a record year but whether it is or isn’t doesn’t really matter as it’s the public who have now re-stocked our warehouse so that help can be given to our community, not only in the weeks leading up to Christmas but well into the New Year.

Thank you one and all.

Nigel Tedford
General Manager
[Stockport Trussell Trust](#)



Stockport Trussell Trust runs 8 food banks across the borough.

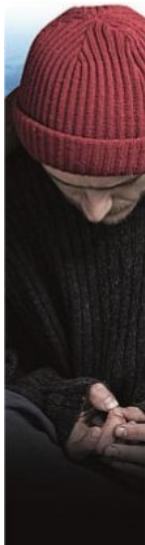


See how you can help this winter!

Macc have set up a dedicated webpage listing requests for support and donations from voluntary organisations and groups across Manchester. If you are interested please visit the page [here](#) and check back as they are regularly updating this page. If you would like to add to the list, please email the details to [Aleena](#).



How do you help someone sleeping rough?



If you come across a rough sleeper you can inform [StreetLink](#), a website, mobile app and phone line that enables members of the public to alert local authorities and street outreach services about people they have seen sleeping rough, which will help them locate people and offer support. Please provide as much information as you can, such as:

- Location of where the person is sleeping rough - be as exact as possible
- Time of day you have seen the person there
- Gender and age
- What the person looks like
- The person's name - just a first name can help.
- Are there any issues to be aware of? eg is the person under the influence of alcohol?

At times of cold or severe weather conditions, local councils will try to secure additional emergency provision for those who may be sleeping rough.

It is important to note that if you think the person you are concerned about is under 18 please do not contact StreetLink but instead call the police.

On GMPA’s website [here](#) you can check the Christmas and New Year opening hours of many of the homeless support providers across Manchester.

For more information about Greater Manchester Poverty Action

please visit our [website](#), follow us on [Twitter](#) or visit our [Facebook](#) page.

We want to find new ways of working together, share the network’s successes and provide a voice for the people living in poverty in our region but we can only do this with your help and support.

Copies of previous newsletters are available on our [website](#) If you would like to submit an article please [get in touch](#).

NB GMPA does not have full-time dedicated administrative support so please do not expect an immediate response.



Views expressed in this newsletter are not necessarily the views of GMPA. We try to fact-check all articles and events, but if you notice an error please [let us know](#) so we can correct it in a future newsletter.